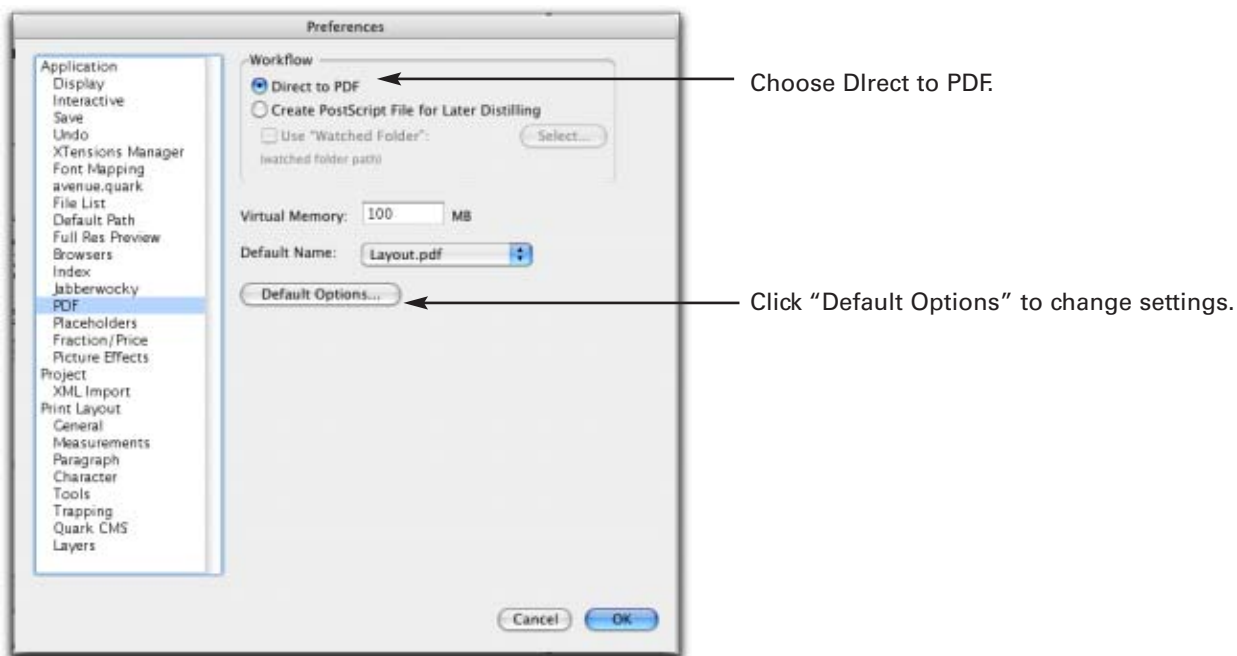


## Wisconsin Web Offset user guide for creating pdf files for print production.

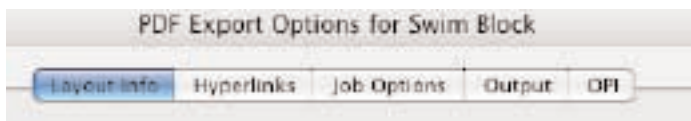
In QuarkXpress 6.0 or later you can create PDF files directly from QuarkXPress. You no longer need to create a post-script file and use Adobe's Acrobat Distiller®.

Create your document with process color and high resolution images. A very few "TrueType" fonts will not properly embed in a pdf file. Check your typestyle manufacture if you are in doubt. Unless you have your *Print Layout* -> *General Preferences* set to "Verify", it is a good idea that before creating a pdf file for your printing project you double check your "Usage" dialog box and make sure no pictures are missing or modified or no fonts are missing. *Utilities*-> *Usage*.

- You can set up your QuarkXPress *Preference PDF* -> *Default Options* before making your pdf and you will not have to check each tab, every time you make another pdf.



Each tab sets "default options" for the export of the pdf file.



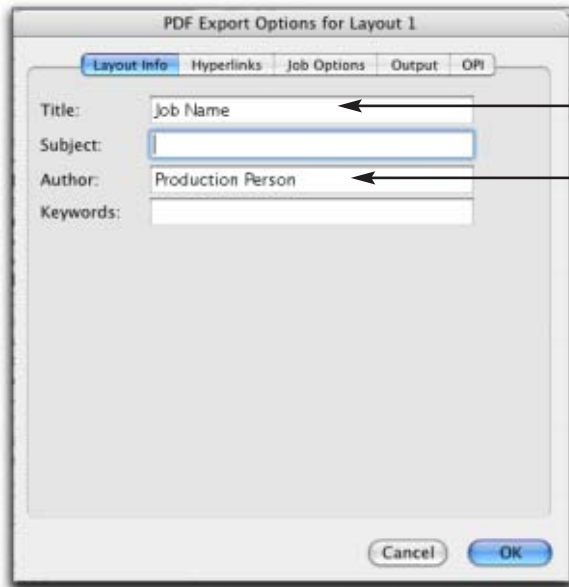
for additional technical support or questions contact Kim Tuyls ([kim.tuyls@wwoffset.com](mailto:kim.tuyls@wwoffset.com))

21045 Enterprise Avenue • Brookfield, WI 53045 262•395•2008 toll-free 877•201•6809

[www.wwoffset.com](http://www.wwoffset.com) – [ftp.wwoffset.com](ftp://www.wwoffset.com)

# PDF's from QuarkXpress 6.0 or 6.5

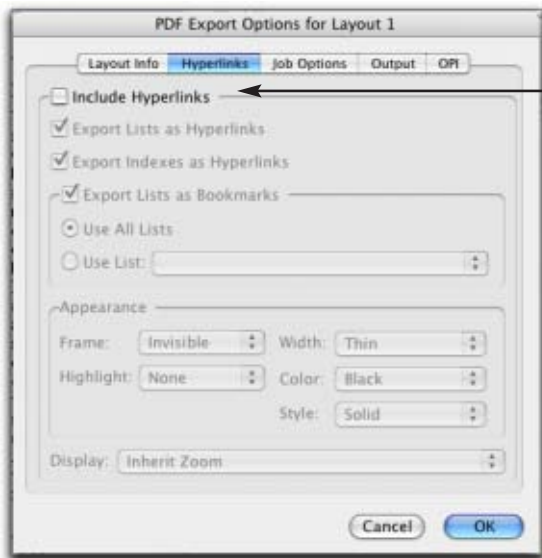
The **Layout Info** tab is a convenience and courtesy to the viewer of the document. Remember when set a default preference the information you enter will appear on "all pdf's" created with this copy of QuarkXPress. You can edit this information at export, by clicking the options button and Layout info tab.



Enter the job name. Keep your pdf from becoming confused with others that could have the same name.

Who created the QuarkXPress documents and pdf helps when questions arise.

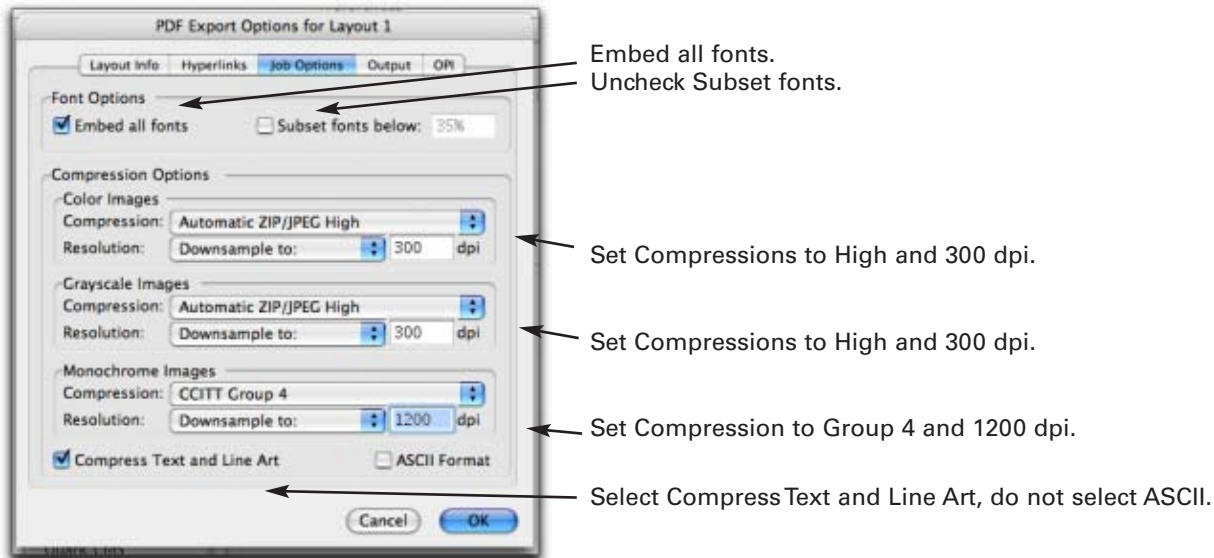
**Hyperlinks** are not part of a "pdf for print" file. Uncheck. Hyperlinks can be added later if required for another use.



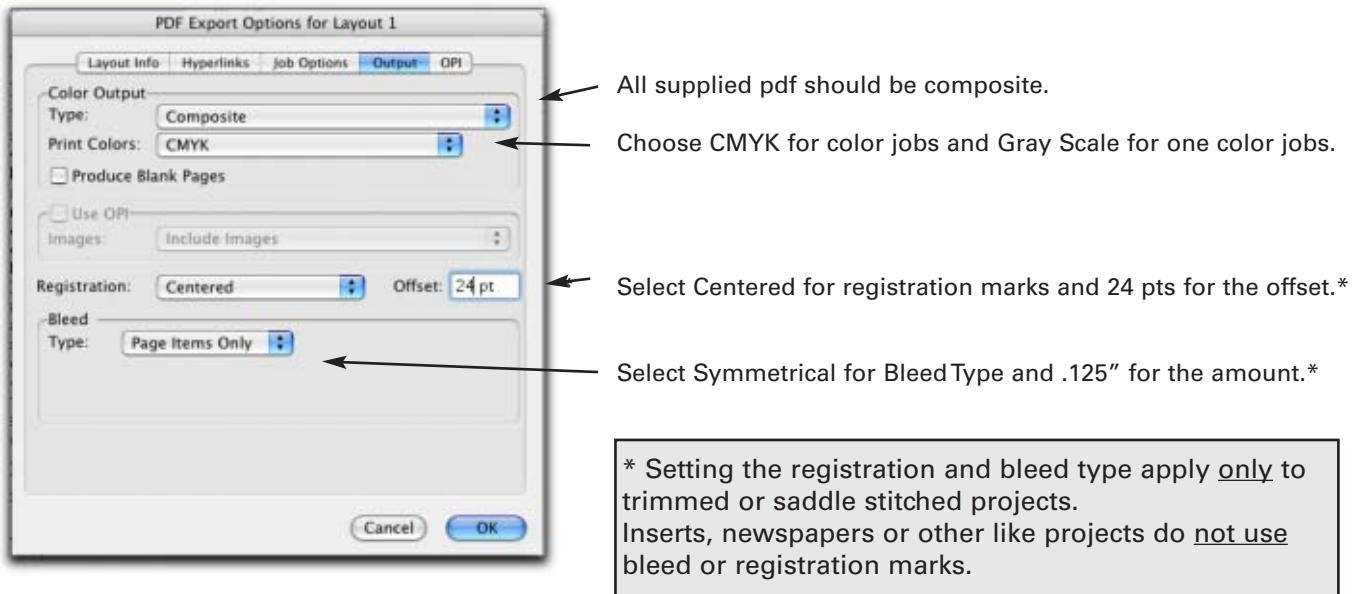
Uncheck the Include Hyperlinks.

# PDF's from QuarkXpress 6.0 or 6.5

- The **Job Options** tab sets many of the most important aspects for a print job pdf. Embed all the fonts, do not sub-set fonts or the Acrobat Touch-up tool will not be able to make any corrections if necessary. Set the color and gray scale compression for high quality compression and downsample to 300 dpi to optimize file size. (These settings are opposite from Acrobat Distiller.) Text and line art compression will not lose any detail.

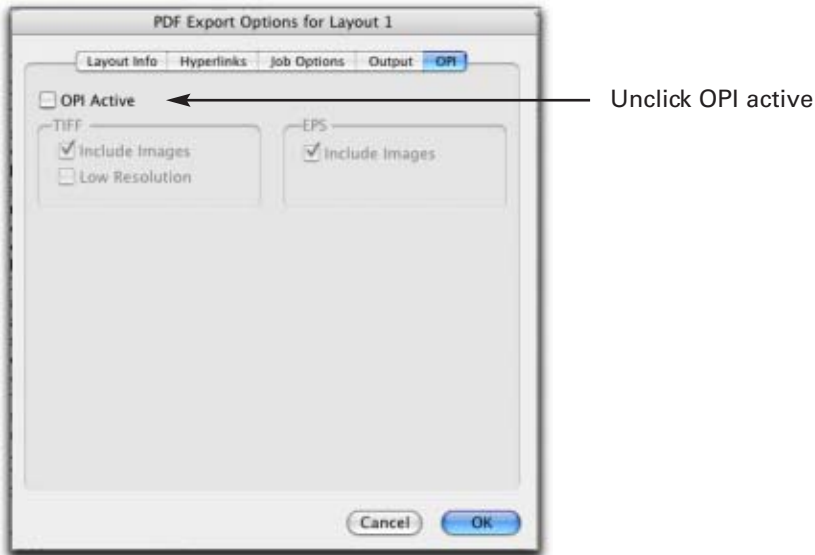


- The **Output** tab is as equally important is providing a pdf for a print job.



# PDF's from QuarkXpress 6.0 or 6.5

- The **OPI** tab pertains only to the use of low-resolution – high-resolution image swapping and should be turned off.



- Choose File ->Export ->Layout as PDF

The "OPTIONS" button, allows to double check your default preference settings to ensure they are correct. Name your pdf file, click save. It's a good idea to open your pdf in Acrobat and review your job to make sure it looks exactly as you intended.



for additional technical support or questions contact Kim Tuyls ([kim.tuyls@wwoffset.com](mailto:kim.tuyls@wwoffset.com))

21045 Enterprize Avenue • Brookfield, WI 53045 262•395•2008 toll-free 877•201•6809

[www.wwoffset.com](http://www.wwoffset.com) – [ftp.wwoffset.com](ftp://wwoffset.com)